

Name: _____

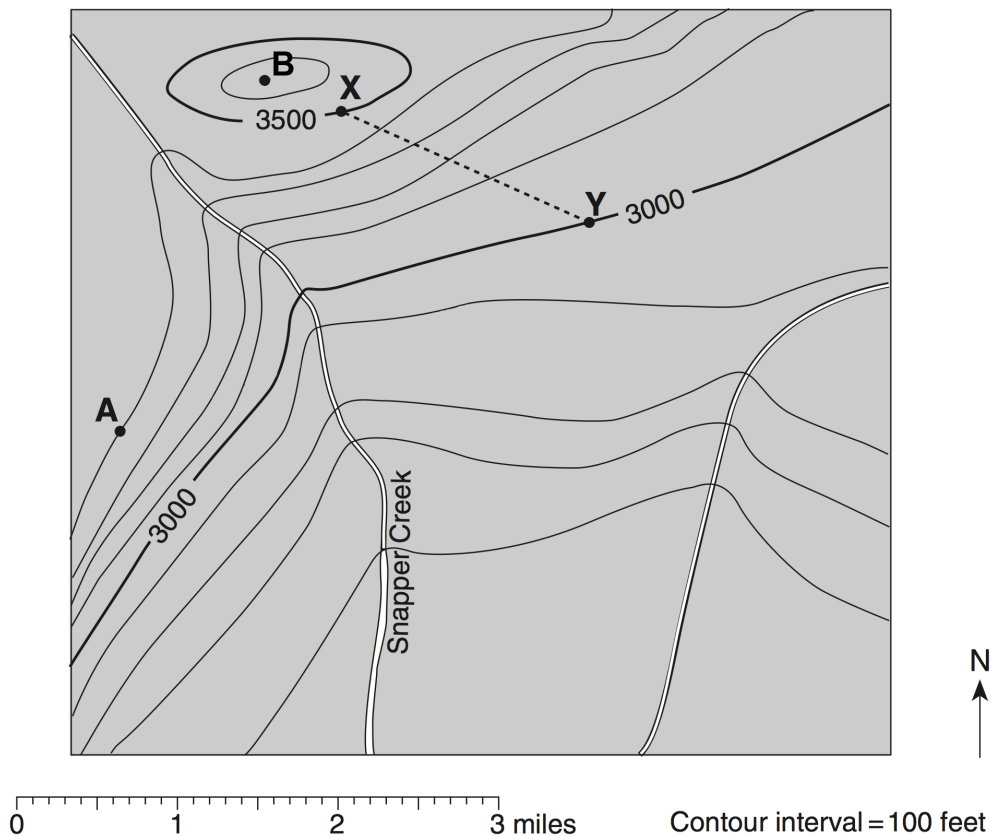
Date: _____ Period: _____

Mapping the Earth

The Physical Setting: Earth Science

Supplemental: Topographic Maps III

Base your answers to questions 1 through 4 on the topographic map below and on your knowledge of Earth science. Points A, B, C, and D represent locations on the surface of Earth. Elevations are measured in feet.



- In which general direction does Snapper Creek flow?
 - east
 - west
 - north
 - south
- What is the approximate gradient from point X to point Y on the map?
 - 238 feet per mile
 - 263 feet per mile
 - 294 feet per mile
 - 333 feet per mile
- What is the elevation of point A?
 - 3200 feet
 - 3300 feet
 - 3400 feet
 - 3500 feet
- What is the maximum elevation at point B?
 - 3599 feet
 - 3699 feet
 - 3799 feet
 - none of the above