

Name: _____

Date: _____ Period: _____

Water and Climate

The Physical Setting: Earth Science

Supplemental: Annotating Class Notes

Directions: Using the Class Notes: Water and Climate, complete the following activity.

I. The Water Cycle

Directions: Match the Terms.

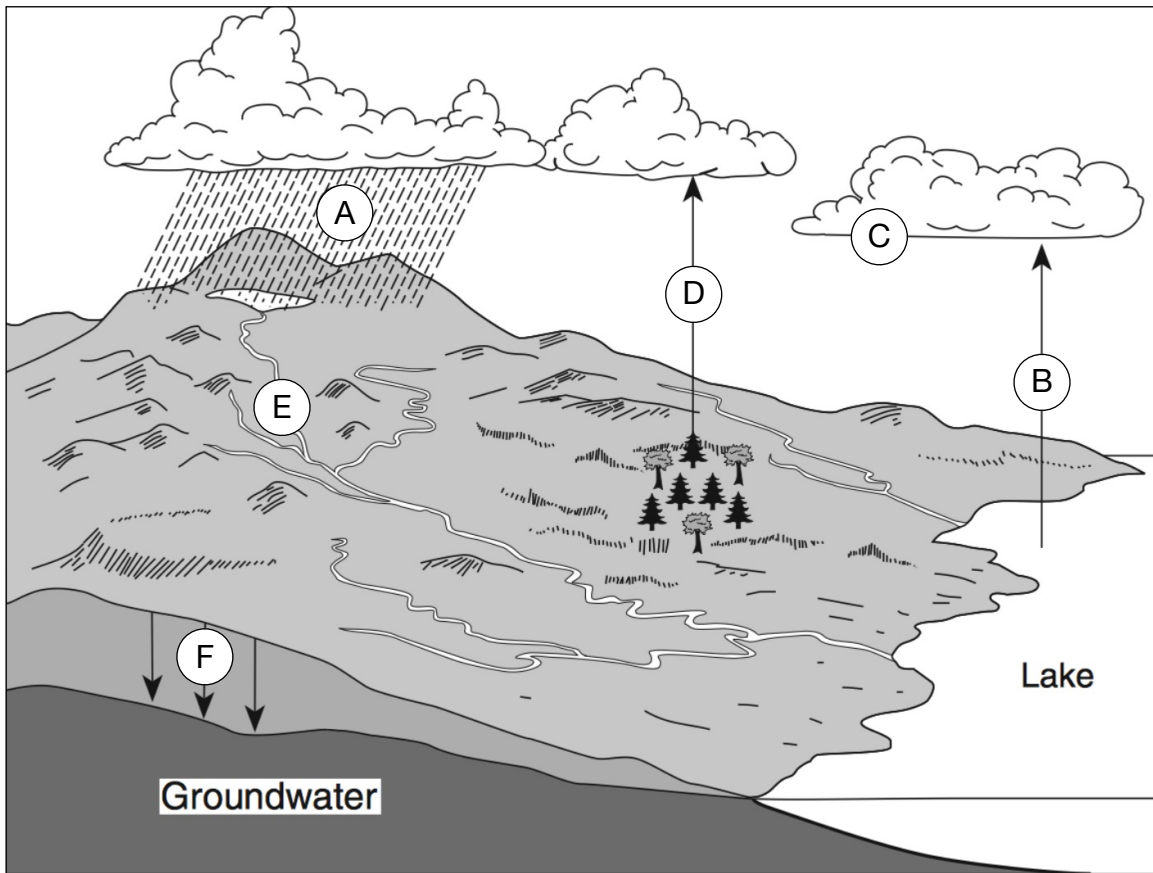
- | | |
|---------------------|--|
| _____ Capillarity | a. product of condensation that falls from the sky |
| _____ Evaporation | b. percent of open pore space in the ground |
| _____ Condensation | c. water moving against the pull of gravity |
| _____ Transpiration | d. process by which water enters the ground |
| _____ Precipitation | e. when water vapor turns into a liquid |
| _____ Infiltration | f. measure of how water flows through a porous solid |
| _____ Porosity | g. when a liquid turns into water vapor |
| _____ Permeability | h. process of water entering the atmosphere via plants |

Directions: List the factors that affect infiltration.

- | | |
|----------|----------|
| 1. _____ | 4. _____ |
| 2. _____ | 5. _____ |
| 3. _____ | 6. _____ |

Supplemental: Annotating Class Notes

Directions: Write in the correct term to describe each process in the water cycle.



A. _____

D. _____

B. _____

E. _____

C. _____

F. _____

II. Climate Variables

Climate - _____

Supplemental: Annotating Class Notes

Directions: List the climate variables.

- | | |
|----------|-----------------------|
| 1. _____ | 5. _____ |
| 2. _____ | 6. _____ |
| 3. _____ | 7. _____ |
| 4. _____ | 8. <u>Cloud Cover</u> |

Questions: Answer the following questions on climate variables questions.

1. What happens to temperature as you move from lower latitudes and higher latitudes?
2. What are prevailing winds and what are they caused by?
3. What latitudes on Earth have dry conditions due to sinking, warming and contracting air?
4. Describe the temperature range on an inland city to that of a coastal city.
5. What is the cold water ocean current that affects the west coast of the United State?
6. If Matt were to climb Mount Everest, what temperature change would he experience?
7. When mountains intersect planetary winds, what occurs when the air rises up the mountain?
8. On a cloudy night, why does the temperature usually increase?

Supplemental: Annotating Class Notes

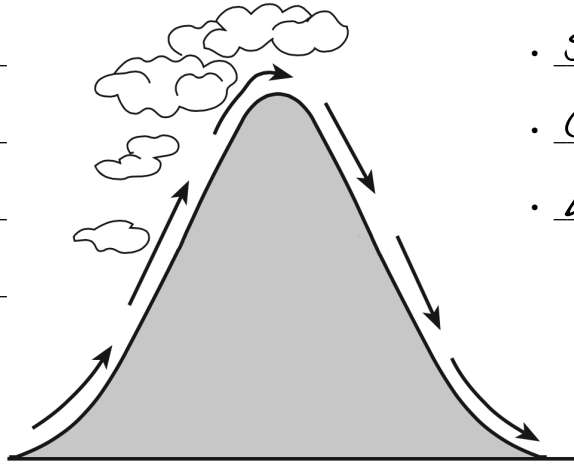
III. Rainfall Patterns

Windward - _____

Leeward - _____

Directions: As winds travel over the mountain describe what happens to the air on the windward side and the leeward side.

- C _____
- C _____
- E _____
- R _____



- S _____
- C _____
- W _____

1. What are the conditions like on the windward side for the following?

- Temperature -
- Vegetation -
- Precipitation -

2. What are the conditions like on the leeward side?

- Temperature -
- Vegetation -
- Precipitation -