

Name: \_\_\_\_\_

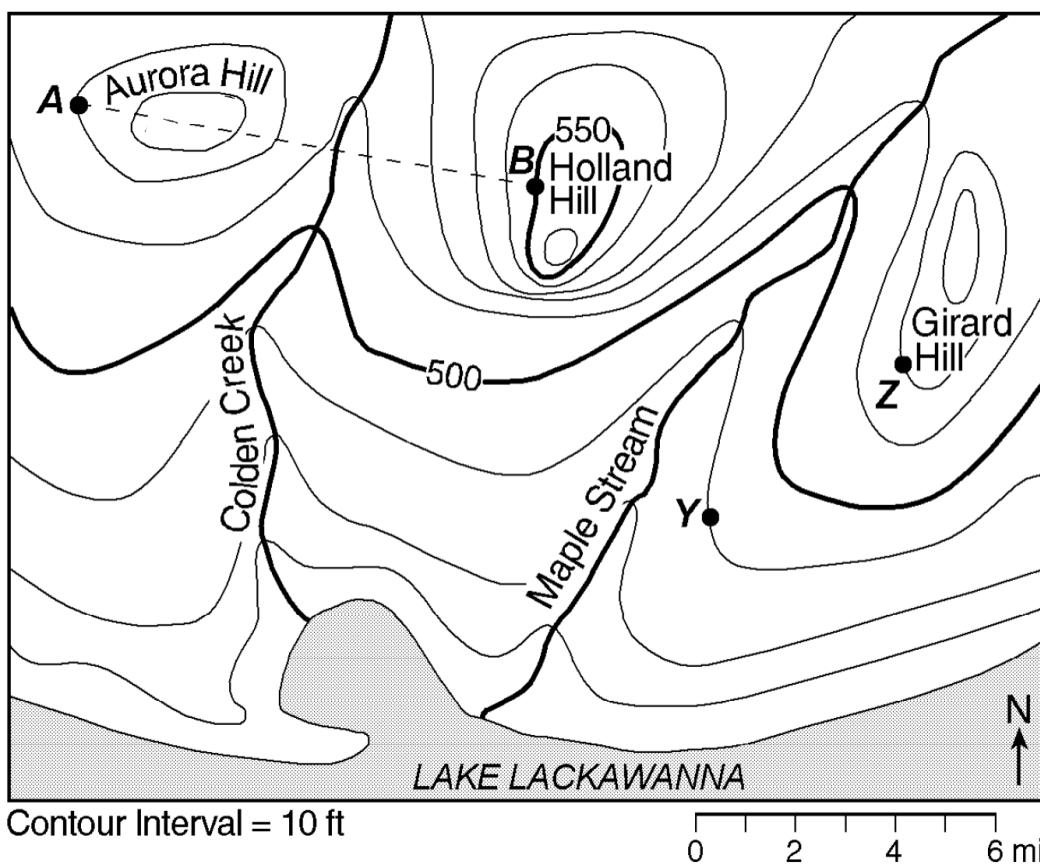
Date: \_\_\_\_\_ Period: \_\_\_\_\_

# Mapping the Earth

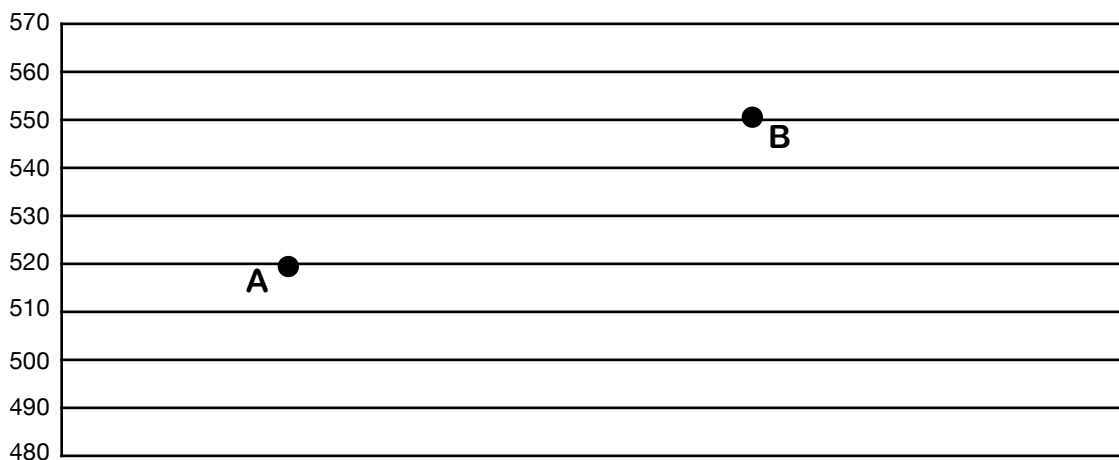
The Physical Setting: Earth Science

## Worksheet: Topographic Maps III

On the topographic map below, points A, B, Y, and Z are reference points. The symbol 533 represents the highest elevation on Aurora Hill.

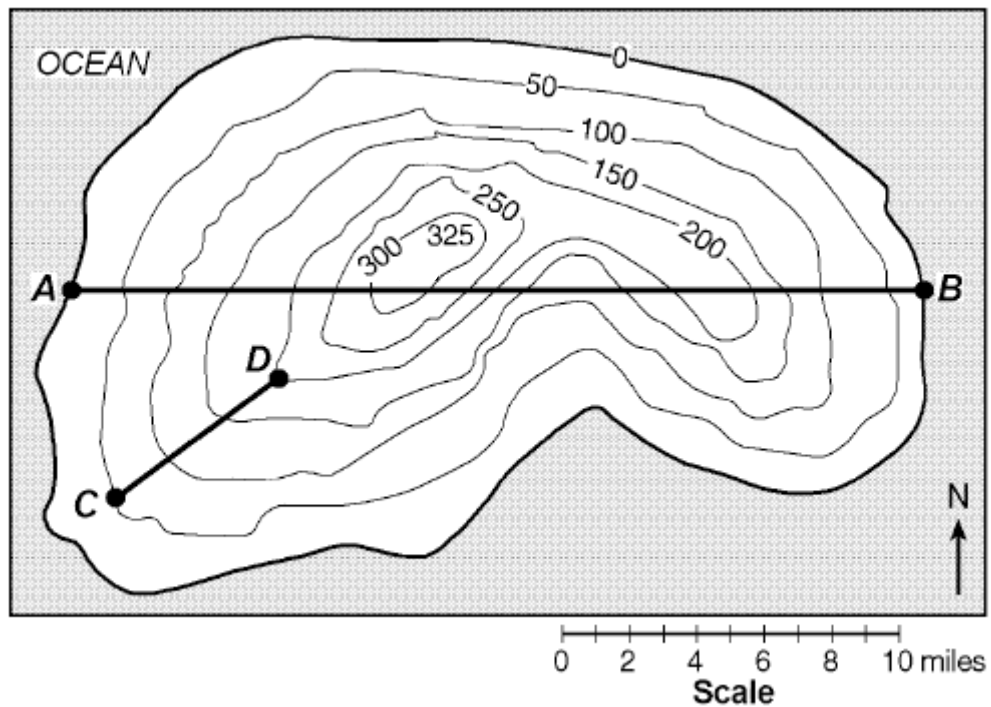


On the grid below, construct a topographic profile from point A to point B.



# Worksheet: Topographic Maps III

On the topographic map of an island shown below, elevations are expressed in feet. Points A, B, C, and D are locations on the island. A triangulation point shows the highest elevation on the island.



On the grid below, construct a topographic profile between point A and point B.

